

Corner Country

OUTBACK NEW SOUTH WALES

"Where I want to go!"



"Wherever I go in the bush I always find my way back and always come out at the place where I want to go."

Alfred Howitt, 1859 *



**CORNER COUNTRY TRACKS, ACCOMMODATION
AND PLACES OF INTEREST**

www.outbacknsw.com.au



Corner Country. “Where I want to go”.

Corner Country, the area bordered by the South Australian and Queensland sections of the wild dog fence, is filled with places just waiting for you to discover.

Whether you are passing through or planning to stay for a while, our touring routes will lead you to places seldom visited by travellers, and to the two most remote, iconic communities in New South Wales- **Milparinka and Tibooburra**.

Along the way you will be welcomed by **track mates**, people on station properties and in the communities, who are working together to make your visit special. Whether camping out, or spending a night at a homestead, in shearers’ quarters, or a historic hotel, there’s always a place for you.

So, why not join us in *our* outback? Make **Corner Country** the place you want to go.



Cover quote: *Howitt led the Burke and Wills’ rescue expedition*
Main cover image: *R Clarke*

For more information visit www.outbacknsw.com.au

CORNER COUNTRY TOURING ROUTES

STURT'S STEPS



Mt Arrowsmith Hills

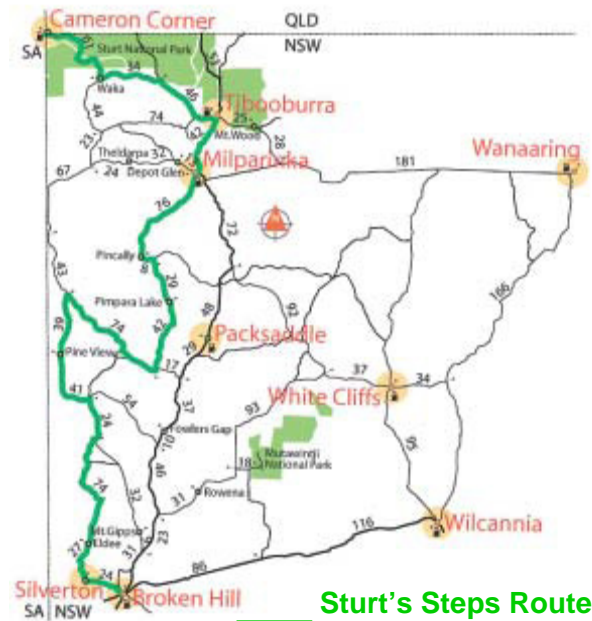
Follow a route that approximates that taken by Captain Charles Sturt during his 1844-45 inland expedition, along the western road from Silverton, before turning north-easterly toward Milparinka.

Alternatively, travel northwards along the Silver City Highway before taking one of several roads linking with the marked route.

Follow Sturt's Steps to Cameron Corner, Innamincka and Birdsville.



Sturt's cairn (J. Giddey)



Sturt's Steps Route

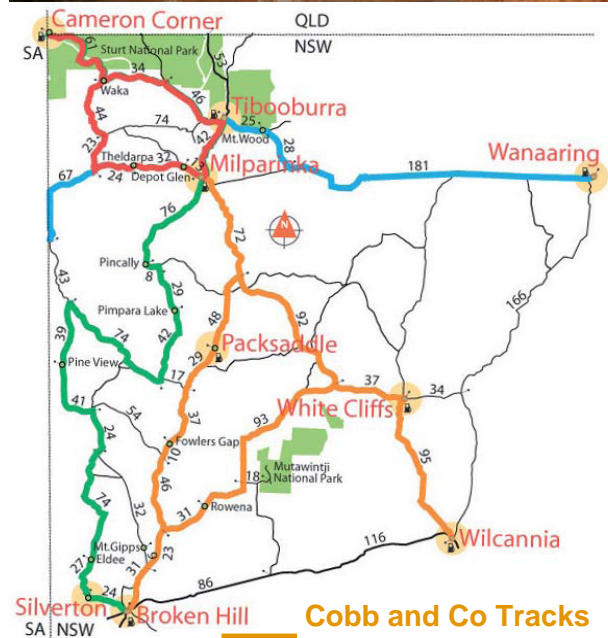


COBB AND CO TRACKS



In the 1880s a miners' trek to the Albert Goldfields began in Wilcannia, and ended several weeks later on the goldfields of Mt Browne, Milparinka or the Granites (Tibooburra). Cobb and Co established regular runs to the goldfields before they were taken over by Kidman and Co and Morrison Bros. Shanty hotels and horse change stations were located about every 40 kilometres along the routes.

Visit Mutawintji National Park along the way, or link up with the Darling River Run for a complete adventure.



Cobb and Co Tracks



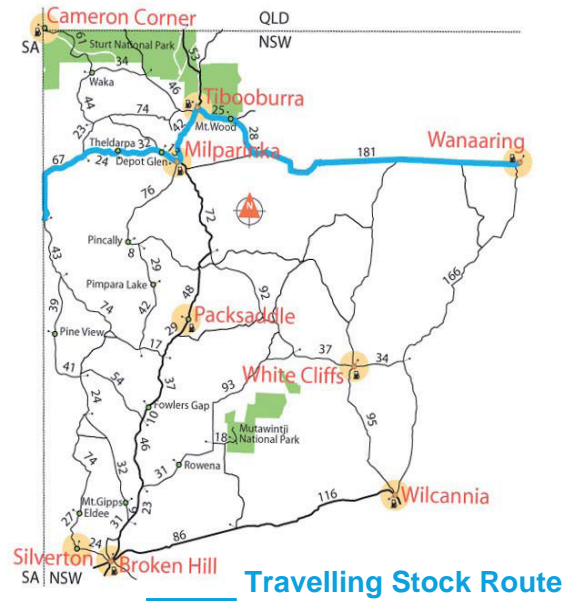
TRAVELLING STOCK ROUTE



Public watering place sign.(T Sevil)

Before motorised transport, sheep and cattle were walked along *travelling stock routes* across the Corner Country. These routes included designated watering points for animals. They were also used for trade by cameleers and bullock teamsters, and extended across state borders.

Link your travels to Sturt's Steps, or the Dowling Track (Bourke-Hungerford-Thargomindah) to the east.



Travelling Stock Route



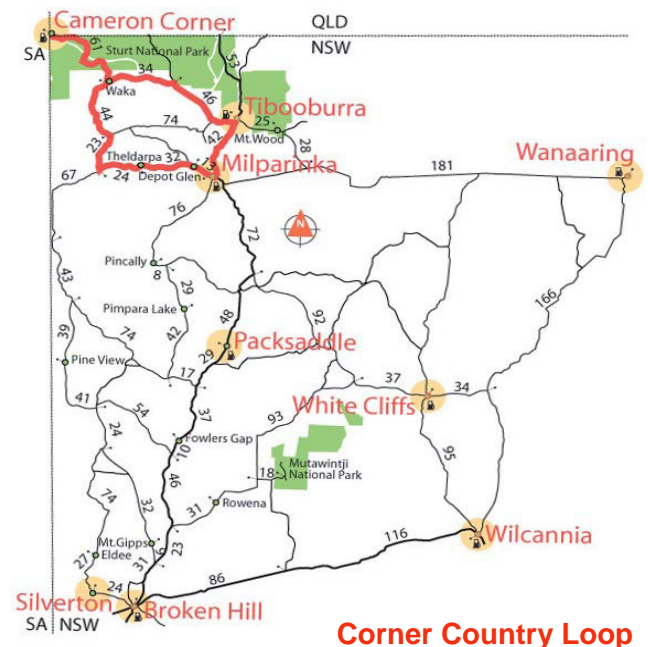
CORNER COUNTRY LOOP



Sturt's cairn (R Clarke)

Each of the Corner Country tracks passes through the historic townships of Milparinka and Tibooburra.

Travel the **Corner Country Loop** to visit these communities and the area's many heritage sites including Sturt's Depot Glen, Poole's Grave, Sturt's Cairn, Mt Browne Goldfields, (*try some fossicking!*), Fort Grey, Cameron Corner, the wild dog fence, and Sturt National Park.



Corner Country Loop



CORNER COUNTRY ATTRACTIONS

Artists and photographers

Opportunities abound for artists and photographers to capture the wonderful landscapes and colours of the Corner Country.



Bird-watching and other native wild-life

Pack the binoculars and the bird book and head out and about for an opportunity to spot our many wonderful birds. Some quite rare species have been sighted on *trail mates'* properties.



Sturt's Depot Glen

14 kms from Milparinka is the turn-off to Depot Glen, Sturt's camping site during six months of his expedition. Other locations include Poole's Grave and Sturt's Cairn on Mt Poole.

Milparinka

At the heart of this first town of the Corner Country is the award-winning Milparinka Heritage Precinct, featuring local history, mining, and pastoral industry interpretive displays. The **Visitor Information Centre** is located in the former police station.



Mt Browne Goldfields

Just 16 kms SW of Milparinka are the remains of the goldfields. The ruins of the old township are still visible. Pack your metal detector for a spot of fossicking.

National Parks

Sturt and Mutawintji National Parks are both located within the Corner Country. Visit Sturt to appreciate the rippling sands of the Simpson-Strzelecki dunefields and jumpups, and Mutawintji for its rugged gorges and Aboriginal rock-art.

Station tours.

Take a station tour when staying with a network member for access to some of the region's rarely seen historic locations or places of local natural beauty.

Tibooburra

Tibooburra was established at the height of the 1880s gold rush, and has many attractions, including historic buildings, mining relics, pioneer heritage and the **Tibooburra Outback School of the Air**. In addition to traditional hotels and motels the former school hostel also provides accommodation.



Tibooburra Keeping Place

The Local Aboriginal Land Council maintains a unique collection of local Aboriginal artefacts in Tibooburra, whilst campsites are available at the reserve a short drive from town.

Geological Tours

Guides to the fascinating geology of the Tibooburra Inlier and Dome and other Corner Country locations are available from the Milparinka Visitor Information Centre.

Wildflowers

When in season, wildflowers of the Corner Country provides a wonderful show of colour including some seldom - seen species.



LOCAL EVENTS

Packsaddle Gymkhana
Milparinka Gymkhana
Milparinka Field and Game shoots
Tibooburra Gymkhana & Rodeo
Tibooburra Bikekhana

Easter weekend
July school holidays
Every third Saturday
Labour Day weekend
New Years Eve

For a complete list of Corner Country attractions visit www.outbacknsw.com.au

CORNER COUNTRY TRACK MATES

More than a place to stay.

"Track Mates" is a network of homestead and traditional accommodation places located along the touring routes. Each offers not just a place to stay, but also activities including bush walking, bird watching and exploring landscapes rarely seen by Corner Country visitors.

"Track Mates" and Corner Country touring routes are colour-coded, making it easier for visitors to plan *"where they want to go"*. Check the maps for details.



Gunpowder storage bunker, Mt Gipps

Eldee

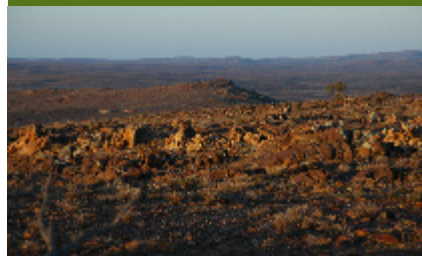


56 km NW Broken Hill

Self-catered & hosted accommodation. 4WD tag along tours, bird watching, stargazing, bushwalking, historic site, camp fires in winter and more.

Contact Naomi on 08 80912578
Email: eldeestation@bigpond.com

Mt Gipps



40 kms N Broken Hill

Accommodation includes self-catered cabins, shearers' quarters and campsites. Features mining sites, gum creeks and stunning views.

Contact Kym on 08 80913537
Email: jk.cramp@bigpond.com

Pine View



180 kms N Broken Hill

Self-catered homestead accommodation, shearers' quarters and campsites. Features include Sturt's campsite at Flood's Creek, dingo fence and station tours.

Contact Jenny on 08 80912513
Email: pineview1@bigpond.com

Pincally



70 km SW Milparinka

Homestead and cottage B and B in lovely bush garden setting. Campsites. Features: birds, animals, landscapes, School of the Air

Contact Zanna on 08 80913571
Email: zannadoo2@bigpond.com

Packsaddle Roadhouse



175 km N Broken Hill

Cabin accommodation and caravan sites. Licensed "woolshed" dining-room. Take-away meals and liquor. Fuel.

Contact Mia on 08 80912539
Email: packsaddle3030@bigpond.com

Milparinka Hotel



Loftus Street, Milparinka

Accommodation in historic hotel rooms or cabins. Meals and fuel available. Catering for groups.

Contact 08 80913863.
Email: admin@outbacknsw.com.au

Toole's Family Hotel



Briscoe Street, Tibooburra

Motel rooms with en-suite, shared facilities in hotel. Clifton Pugh murals in the bar. Lunch and dinner meals. Public shower and laundromat.

Call 08 80913314
Email: thetoole.family@bigpond.com

Granites Motel



Briscoe Street, Tibooburra

Accommodation includes motel, cottage and cabin accommodation, caravan and campsites. Meals and fuel available.

Contact Mavis on 08 80913477
Email: jackson.corp@bigpond.com

Tibooburra Hotel



Briscoe Street, Tibooburra

Accommodation and meals in historic "two-storey" hotel. Features "bar with hats". Centrally located in township.

Call Mac and Kaz on 08 80913310
Email: macca@tibooburrahotel.com.au

Mt Wood



27 km E Tibooburra

Accommodation in historic homestead or shearers' quarters on Sturt National Park. Features museum, bird watching and touring.

Call Tibooburra office 08 80913308
Email: tibooburra.office@environment.nsw.gov.au

Mt Browne



16 SW Milparinka

Camping sites on original goldfields. Historic cemetery and buildings. Fossicking available.

Contact Charlie or Danielle on 08 80913588.
Email: mountbrowne@bigpond.com

Theldarpa



47 km W Milparinka

Self-catered accommodation in shearers' quarters. Campsites. 4 WD tracks & tours, bird watching, historic sites.

Contact Sarah or David on 08 80913576
Email: theldarpa@bigpond.com

Cameron Corner Store



140 km W Tibooburra

Uniquely located at the junction of the three states. Cabin and camping accommodation, meals and fuel.

Contact the store on 08 80913872
Email: camcorner@telstra.com

Corner Country Store



Town centre, Tibooburra

Breakfast from 7am, real coffee, fuel, tyre repairs, gas refills, ice, EFTPOS

Contact Vicki on 08 80913333
Email: ccstibooburra@telstra.com

T J's Roadhouse



Town entrance, Tibooburra

Fuel, licensed restaurant, take-away meals, general groceries, gas refills. internet, Post Office

Contact Mavis on 08 80913340
Email: jackson.corp@bigpond.com

CORNER COUNTRY TRACKS, ACCOMMODATION AND PLACES OF INTEREST

In Sturt's Steps is an exciting route through a remarkably diverse and heritage-rich landscape. In using the name of the first of Australia's inland explorers we pay tribute to Captain Charles Sturt whose steps across the Corner Country created a pathway for the settlement of Inland Australia.

Settlers soon followed Sturt and *Travelling Stock Routes* were developed. Today station owners are opening up their properties to reveal features of the Corner Country seldom seen by travellers.



Cobb and Co Tracks were established when the famous coach company creates routes to the Albert Goldfields, and later for transportation to Broken Hill.

Discover *Cameron Corner* where three states meet. Explore our unique arid-zone National Parks, *Sturt and Mutawintji*, the historic townships of *Milparinka* and *Tibooburra*, and the many other locations which make the Corner Country *the place to go*.

**Visit Corner Country in 2010-2011.
150th anniversary of the Burke and Wills expedition.**



Outback Travel

Traveling in the Outback can be a perfectly safe and exciting adventure, but there are a few simple rules to follow.

Always use an accurate road map for distances and directions to all locations, and plan your fuel stops.

Road surfaces vary. Long sections of the Silver City Highway are sealed. Travel at speeds appropriate to the road surface.

The Wilcannia to White Cliffs road is fully sealed. All other roads are maintained by the RTA but are unsealed. Most are well signposted.

Carry plenty of drinking water. At least two spare wheels are recommended if you plan to leave the main roads.

Check road conditions and closures during wet weather on 08 8087 0660.

The Milparinka Heritage & Tourism Association Inc, together with the Corner Country Tourism Advisory Group, gratefully acknowledges the support of the NSW Department of Industry and Investment.

For more information visit www.outbacknsw.com.au

*Design and images, unless indicated otherwise, by Ruth Sandow 2009
Mapping by Greg Walker, Design Interaction.*



Industry & Investment

